

# HUNTERS<sup>®</sup>

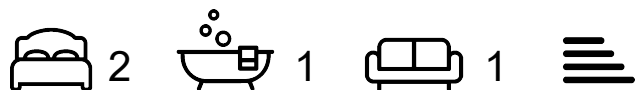
HERE TO GET *you* THERE



## Spaceworks

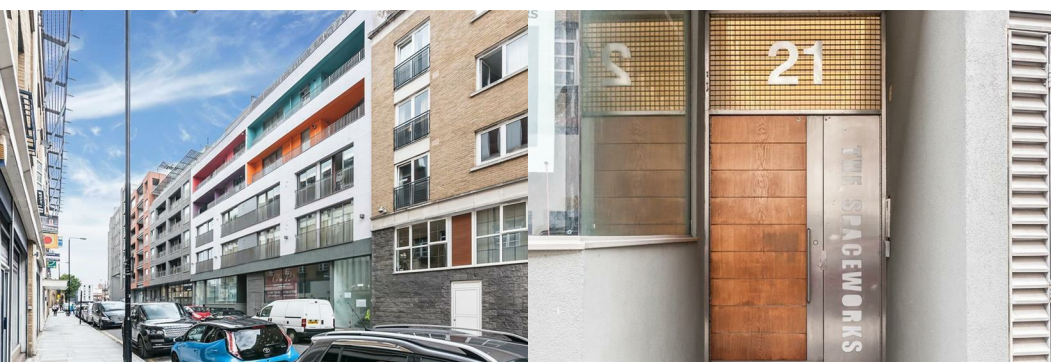
Plumbers Row, E1 1AG

£2,708 Per Month



This well size two-bedroom property boasting its own spacious private terrace with views capturing The Gherkin, The Walkie-Talkie and The Cheese Grater with open plan lounge and white satin kitchen in seamless finish with integrated stainless-steel appliances, generous built-in storage, luxury bathrooms, including an en-suite shower with rainforest shower head and a full separate bathroom with angular white fittings. The apartment has oak wood flooring, gas central heating with designer radiators, full double glazing, security video entry phone system and communal lift

The Spaceworks is located on Plumbers Row just on the Eastern fringe of the City. Here the skyscrapers give way to loft living, and the trendy bars, restaurants, and markets of Brick Lane and Spitalfields create a vibrant environment. This contemporary apartment is within a 3-minute walk from Aldgate East (zone 1) Hammersmith & City and District Line and 7 minutes from Whitechapel Station (zone 2).



Area Map



Floor Plans



Energy Efficiency Graph



These particulars are intended to give a fair and reliable description of the property but no responsibility for any inaccuracy or error can be accepted and do not constitute an offer or contract. We have not tested any services or appliances (including central heating if fitted) referred to in these particulars and the purchasers are advised to satisfy themselves as to the working order and condition. If a property is unoccupied at any time there may be reconnection charges for any switched off/disconnected or drained services or appliances - All measurements are approximate.

**THINKING OF SELLING?** If you are thinking of selling your home or just curious to discover the value of your property, Hunters would be pleased to provide free, no obligation sales and marketing advice. Even if your home is outside the area covered by our local offices we can arrange a Market Appraisal through our national network of Hunters estate agents.